

# User's Manual for IP Telephony Service Setup

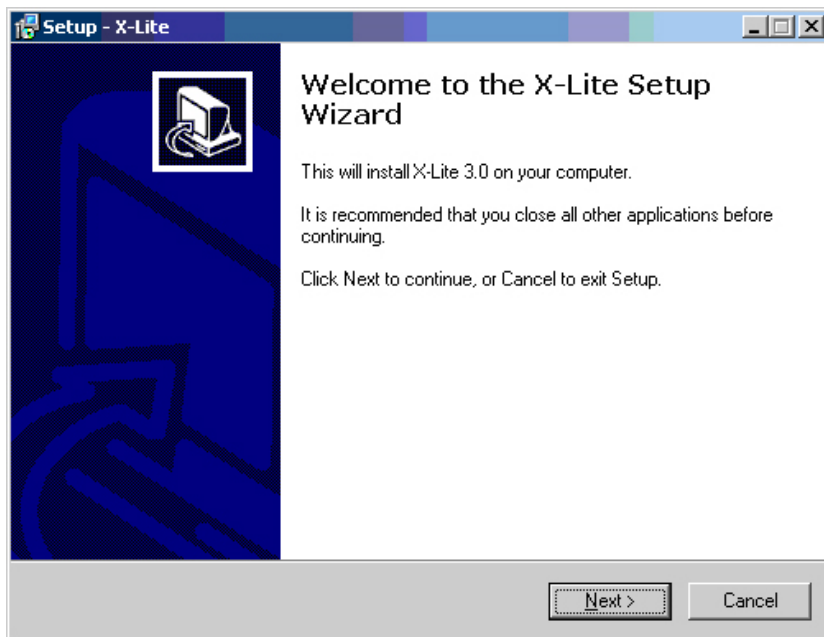
## Step1. Registering

To make use of the "IP telephony" service, you should register in your personal office on site: <http://ipline.b2b.beeline.ua>. While registering, the login and password given by the Connection Manager are used.

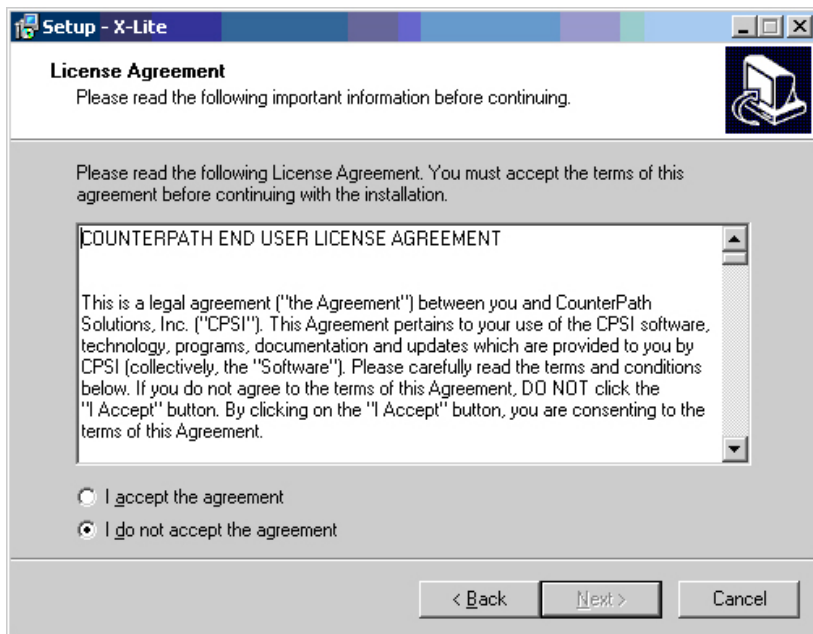
To use the service, you should change the initial password with your own to be used thereafter.

## Step2. Software

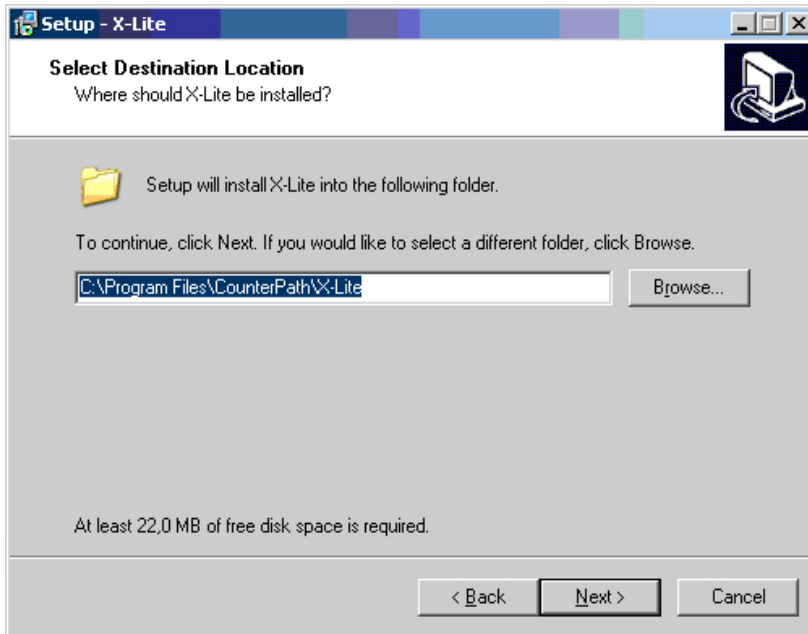
1. Download the special software for IP telephony, for example X-Lite.
2. Initiate the downloaded file and click "Next":



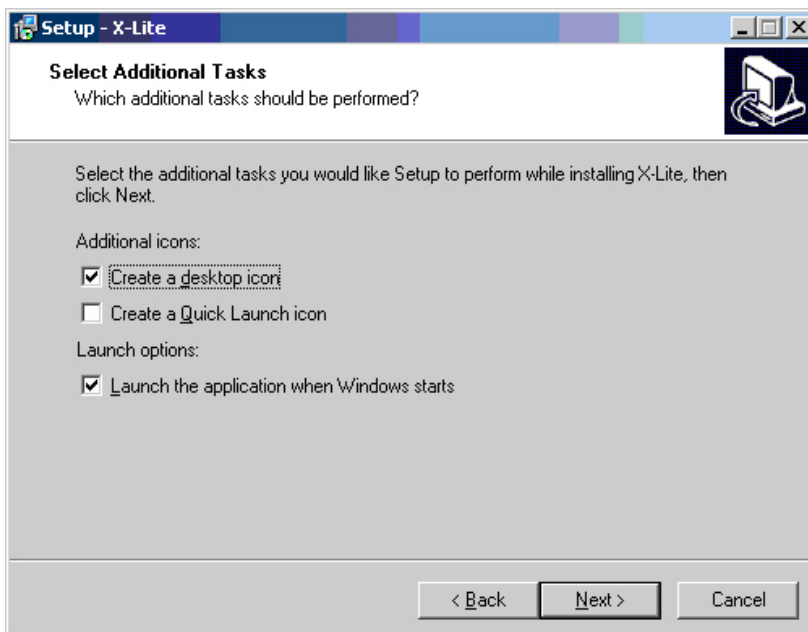
3. Agree to the license terms: "I accept the agreement", and click "Next":



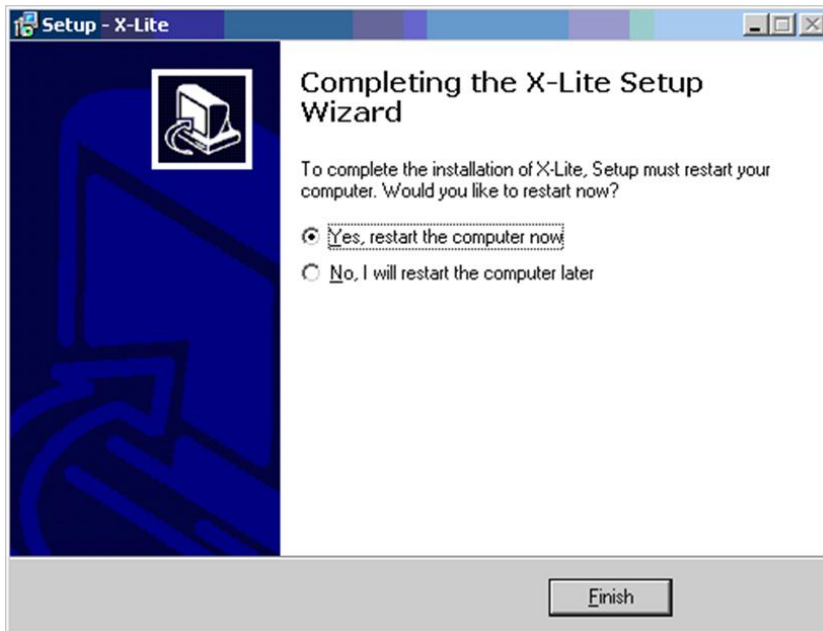
4. Select the way to the folder where to the program will be installed (on default): C:\ProgramFiles\CounterPath\X-Lite) and click "Next":



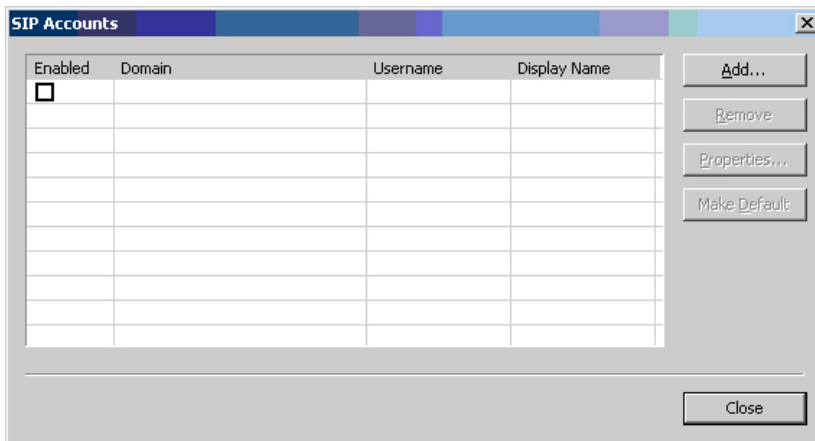
5. Select additional options (to your wish): creation of the desktop icon and program start together with Windows, whereupon click "Next":



6. Wait until installation of all program components is completed and restart your computer:

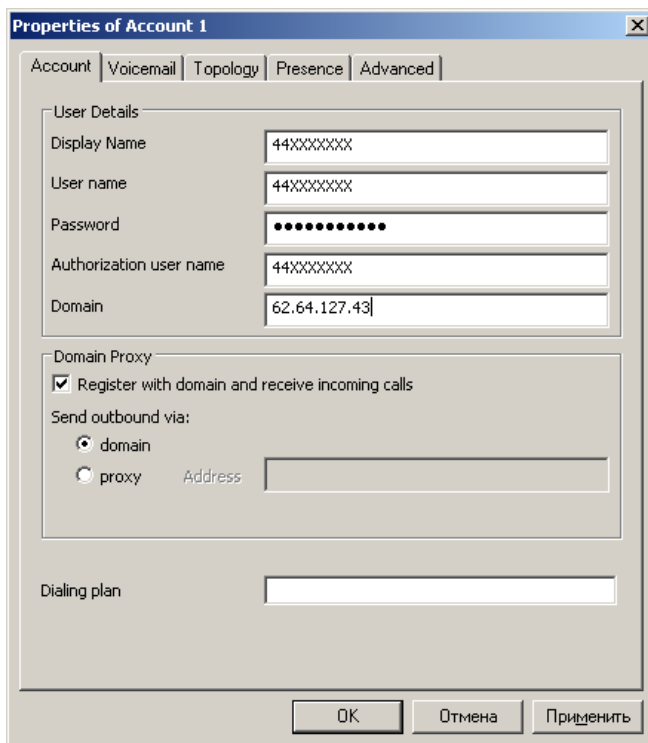


7. Start a program and click "Add..." in the window displayed:



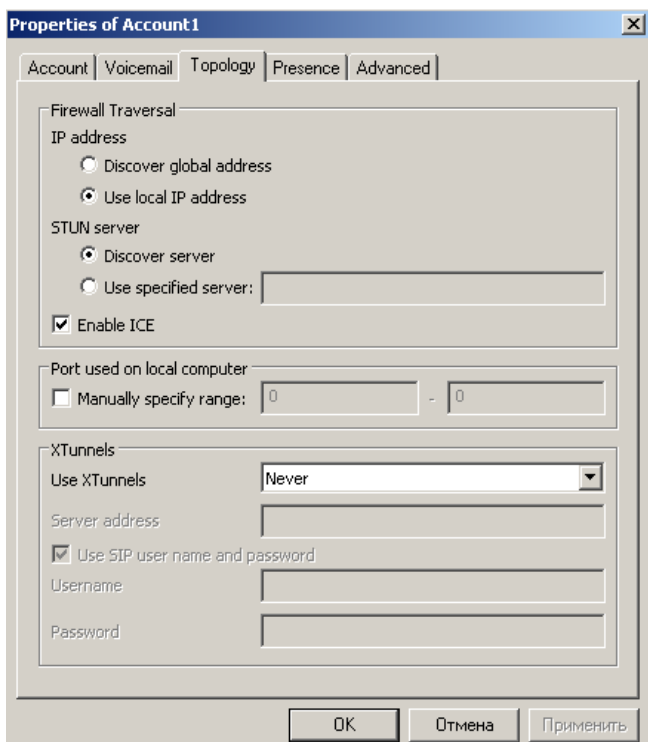
8. Fill in the following fields in the new window:

- «Display name» – enter the name to be displayed or indicate your number;
- «Username» - the login (phone number), e.g., 44XXXXXXX;
- «Password» - the IP telephony access password;
- «Authorization user name» – duplicate entry from the "User name" field;
- Domain – 62.64.127.43;
- Dialing plan – this field is to be blank.



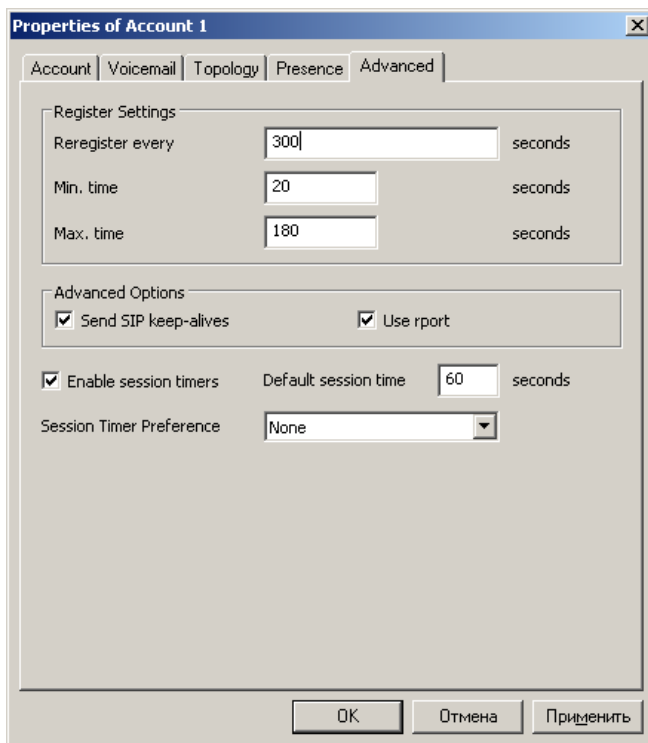
9. Move to the “Topology” screen and edit it as follows:

- «IP-address» – User local IP address;
- «STUN server» – Discover server;
- «Enable ICE» – tick off;
- «Use XTunnels» – Never.



10. Fields in the “ Advanced” screen are to look as follows:

- “Reregister every”: 300;
- “Min. Time” – 20;
- “Max. Time” – 180;
- Tick off the “SendSIPkeep-alives”, “Use report” and “Enable session timers”;
- “Default session time” – 60;
- “Session Timer Preference” – None.



11. Other inserts of the setup window remain unchanged. Click "OK". The IP telephony is set up and may be used. The dialing rules and numbering are the same as those for the ordinary city telephone line.

